

# SHARP®

## MULTIFUNCTIONAL DOCUMENT COMMUNICATION SYSTEM

AN IDEAL BALANCE OF SIZE AND FUNCTIONALITY FOR SMALL WORKGROUP BUSINESS NEEDS



FO-2080



## AN IDEAL BALANCE OF SIZE AND FUNCTIONALITY FOR SMALL WORKGROUP BUSINESS NEEDS

To keep your business workflow moving in the right direction, Sharp introduces the FO-2080 Multifunctional Document Communication System. The versatile FO-2080 combines high speed faxing functionality with the conveniences of high-quality digital copying, network printing, and full color scanning. Its feature-rich copying and printing capabilities are simple and easy-to-use, making them readily accessible to anyone in your workgroup. And with Sharp's long history of award-winning reliability, the FO-2080 is engineered to keep up with today's busy workplace environments. Designed with the small workgroup's everyday business needs in mind, the Sharp FO-2080 Multifunctional Document Communication System offers an ideal balance of size and functionality.

### FAST & EFFICIENT BUSINESS FAXING

The FO-2080 makes everyday business document communication quick and easy. Two-sided documents up to 50 sheets long are easily scanned using the Auto Reversing Single Pass Document Feeder, while built-in Super G3 faxing capabilities ensure that faxes are sent quickly and with no time wasted. Even sending documents to multiple destinations is simple and straightforward with advanced features like Group Dialing, Chain Dialing, and Broadcasting. Equipped with the intelligence to

receive large files without interruption, this device has enough standard memory for up to 50 jobs, or over 100 pages, while the Auto Tray Switching feature will automatically change which paper tray it is using if one becomes empty while printing. And with the ability to adjust resolution settings for standard text, small text, or photos and images, output control is entirely in your hands.

### DIGITAL DOCUMENT IMAGING

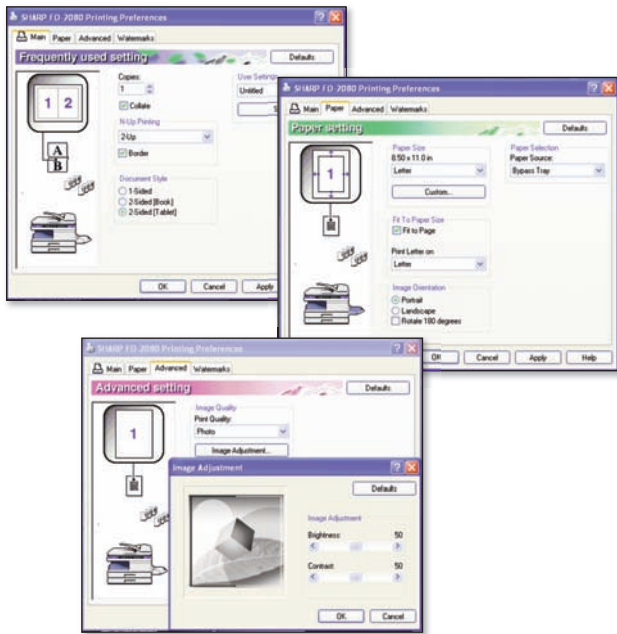
The Sharp FO-2080 delivers much more than just business workgroup faxing capabilities. With Sharpdesk®, Sharp's innovative document management software, all of your business documents can be integrated into one place for easy organizing, editing, sharing, and archiving. And scanning your documents is no problem with Button Manager, Sharp's built-in utility designed to help you select file types (such as PDF, TIFF, and Bitmap), and manage commonly-used destinations for sent files. It gives you the ability to send scanned documents directly to any folder on your computer's hard drive, making storage and filing a simple and speedy one-step process. You can even scan to OCR (Optical Character Recognition), which converts scanned text into a format that you can edit right from your desktop. When combined, Sharpdesk and Button Manager can help you keep your business moving in the direction it needs to go today, tomorrow, and beyond.

#### Versatile Scan-to Functionality



## CONVENIENT, RELIABLE COPYING & HIGH QUALITY PRINTING

The Sharp FO-2080 is not only a highly capable workgroup business fax – this MFP-based model is also a multitasking, multifunctional printer, with the ability to handle your everyday copying and printing needs. This versatile performer delivers high resolution output, along with added print features such as N-Up Printing, Fit to Page, Watermarks and adjustable image quality to help you improve or enhance the appearance of your documents. It can also help you increase office productivity with its instant warm up times, dual paper trays, and Continuous Copying capability, letting you scan once and print up to 99 sheets. And no longer will you have to go far to retrieve professional-looking documents from a centrally-located, shared printer. Small enough to be placed closer to the user, the Sharp FO-2080 has been designed with the ability to create crisp, clear business documents with no hassle and in less time. With its fast speed and advanced features, the FO-2080 achieves an ideal balance between machine size and functionality, giving your workgroup what it needs to keep your business moving!

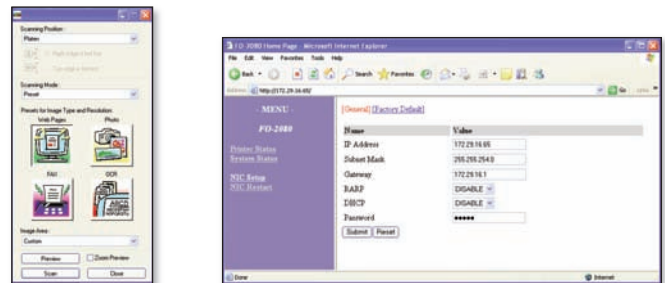


## ADVANCED PAPER HANDLING

The Sharp FO-2080 helps keep workflow moving seamlessly with paper handling capabilities not found in your typical fax machine. It offers two standard 250-sheet paper trays that can accommodate different paper sizes or types, along with a 50-sheet bypass tray for an overall maximum capacity of 550 sheets. It also delivers features such as 2-sided printing, copying and scanning, as well as E-Sort and Offset Stacking, making tasks such as collating, separating, and sorting absolutely effortless. This model is even flexible enough to handle special paper types such as heavy paper, labels, transparencies, and envelopes. The FO-2080 packs impressive performance and surprising paper handling capabilities into a package small enough to fit on a file cabinet, countertop, or even your desktop!

## EASY-TO-USE SHARP UTILITIES

In addition to the versatile document management capabilities found in Sharpdesk and Button Manager, you can also take advantage of Sharp's other integrated software utilities. Taking device control to a whole new level, the Embedded Web Page is Sharp's online management tool, easily accessible from any computer connected to your local area network. Sharp's Printer Status Window is a handy utility that allows you to monitor the status of your documents as they are printing, and can even notify you if an error occurred during the printing process. Another convenient tool is the Online Manual, which lets you easily navigate through all of the technical information on the functions of the machine, or simply search the manual for details on a specific feature. Combined with any of Sharp's award-winning workgroup document systems, these convenient and easy-to-use software applications and utilities give you the control you need to help improve office productivity and efficiency better than ever before.



# FO-2080 SPECIFICATIONS

## Main Specifications

<b>Model:</b>	FO-2080
<b>Type:</b>	Multifunctional Document Communication System
<b>Standard Functions:</b>	Fax/Copy/Print/PC Scan
<b>Copy/Print System:</b>	Laser, dry electrostatic transfer system
<b>Fusing System:</b>	Heat rollers
<b>Developer System:</b>	Magnetic brush development
<b>Light Source:</b>	Cold cathode fluorescent lamp (CCD: 3 components; R, G, and B)
<b>Power Supply:</b>	120 V, 60 Hz, 8.0 A
<b>Power Consumption:</b>	Max. 1.0 kW or less
<b>Weight:</b>	Approx. 50.6 lbs. (22.9 kg) <sup>1</sup>
<b>Dimensions:</b>	20.4" (W) x 17.6" (D) x 18.1" (H) 518 mm (W) x 445 mm (D) x 459 mm (H)
<b>Space Requirements (with trays extended):</b>	31.6" (W) x 17.6" (D) 802 mm (W) x 445 mm (D)
<b>Operating Conditions:</b>	<b>Temperature:</b> 50°F to 86°F (10°C to 30°C) <b>Humidity:</b> 20% to 85%
<b>Supported Operating Systems:</b>	<b>CD-ROM:</b> Windows® 2000/XP (32-bit)/Vista (32-bit) <b>Via Download:</b> Windows XP (64-bit)/Vista (64-bit)
<b>Utilities:</b>	Web-based management, integrated software installer, Printer Status Window, Online manual

## Faxing Specifications

<b>Applicable Telephone Line:</b>	Public Switched Telephone Network (PSTN)
<b>Compression Method:</b>	MH, MR, MMR, JBIG
<b>Transmission Modes:</b>	Super G3, G3
<b>Scanning Method:</b>	CCD flatbed scanning
<b>Scanning Resolution:</b>	8 x 3.85 lines/mm (Standard) 8 x 7.7 lines/mm (Fine, Fine + Halftone) 8 x 15.4 lines/mm (Super Fine, Super Fine + Halftone)
<b>Transmission Speed:</b>	Super G3 (up to 33.6 kbps) <sup>2</sup>
<b>Transmission Time:</b>	Approx. 2 seconds (Super G3 mode/33.6 kbps, JBIG) Approx. 6 seconds (G3 ECM mode/14.4 kbps, JBIG)
<b>Paper Size:</b>	8-1/2" x 11" (Letter), 8-1/2" x 14" (Legal), or A4
<b>Recording Width:</b>	8-1/2" Max. (8-1/2" x 14" printing)
<b>Transmittable Original Size:</b>	When using the RSPF: Maximum: One-sided original: 8-1/2" x 19.7" Two-sided original: 8-1/2" x 14" Minimum: 8-1/2" x 5-1/2" When using the document glass: Maximum: 8-1/2" x 14"
<b>Scanning Width:</b>	8-1/2" Maximum
<b>Halftone Transmission:</b>	256 levels
<b>Contrast (Exposure) Adjustment:</b>	Light, Medium, Dark
<b>Extension Telephone Connection:</b>	Yes
<b>Auto Dialing:</b>	100 Speed Dial numbers; combined total of 18 One-Touch Dial and Group keys; automatic redialing
<b>Group Dials/Broadcasting:</b>	100 destinations/18 groups
<b>Timer Transmission:</b>	Yes
<b>Automatic Document Feeding:</b>	Yes (50 pages)
<b>Memory Capacity:</b>	2 MB
<b>Job Memory:</b>	Up to 50
<b>Error Correction Mode (ECM):</b>	Yes
<b>Duplex Sending:</b>	Yes
<b>Duplex Receiving:</b>	Yes
<b>Import/Export of Address Book:</b>	Yes

<sup>1</sup> Not including toner and drum cartridges.

<sup>2</sup> On ITU-T Test Chart # 1 standard resolution.

Actual transmission time will vary according to line conditions.

<sup>3</sup> May vary depending on product configuration, machine settings and operating and/or environmental conditions.

<sup>4</sup> Starter toner and full-life drum cartridge included with FO-2080.

## Copying Specifications

<b>Photoconductive Type:</b>	OPC drum
<b>Originals:</b>	Sheets, bound documents
<b>Original Feed System:</b>	50-sheet auto reversing single pass feeder (RSPF)/document glass
<b>RSPF Feeding:</b>	Approx. 4 seconds per page (Letter size, standard mode)
<b>Paper Feed System:</b>	<b>Dual Paper Trays:</b> 250-sheet capacity per tray <b>Manual Bypass Tray:</b> 50-sheet capacity
<b>Paper Type:</b>	<b>Paper Cassettes:</b> 15-21 lb. standard or recycled bond paper <b>Bypass Tray:</b> Up to 50 sheets 15-34 lb. standard or recycled bond paper; postcards/envelopes (#10 Monarch)/OHP film /labels one sheet feed
<b>Original Size:</b>	Max. 8-1/2" x 14"
<b>Copy Size:</b>	Max. 8-1/2" x 14" Min. 3-1/2" x 5-1/2" Image Loss: Max. 11/64" (4 mm) (leading and trailing edges) Max. 3/16" (4.5 mm) (along other edges in total)
<b>Copy Speed:</b>	20 ppm (8-1/2" x 11", one-sided copying at 100% copy ratio)
<b>Continuous Copy:</b>	Max. 99 copies; subtractive counter
<b>First-Copy Time:</b>	8.0 seconds <sup>3</sup>
<b>Warm-Up Time:</b>	Approx. 0 sec. <sup>3</sup>
<b>Zoom Range:</b>	<b>Document Glass:</b> Variable: 25% to 400% in 1% increments Fixed Zoom Mode: 25%, 50%, 64%, 78%, 100%, 129%, 200%, 400% <b>RSPF:</b> Variable: 50% to 200% in 1% increments Fixed Zoom Mode: 50%, 64%, 78%, 100%, 129%, 200%
<b>Exposure System:</b>	<b>Document Glass:</b> Moving optical source, slit exposure (stationary platen) with automatic exposure function <b>RSPF:</b> Moving original
<b>Exposure Modes:</b>	AUTO/TEXT/PHOTO
<b>Auto Exposure:</b>	600 x 300 dpi (5 manual steps (TEXT/PHOTO))
<b>Resolution:</b>	Scan: 600 x 300 dpi; Output: 600 x 600 dpi (AUTO/TEXT mode) Scan: 600 x 600 dpi; Output: 600 x 600 dpi (PHOTO mode)
<b>Gradation:</b>	256 tones (8 bits)
<b>Output Tray Capacity:</b>	200 sheets (face down)
<b>Offset Stacking:</b>	Standard paper shifter (offset stacks sets by 1 inch in output tray)
<b>Copy Features:</b>	Duplex copying, offset stacking, electronic sorting, auto tray switching, 2-in-1 copy, zoom, margin shift, variable memory adjustment, and auto shut off

## Network Printing Specifications

<b>Print Speed:</b>	Up to 20 ppm
<b>Resolution:</b>	600 x 600 dpi
<b>Port Types:</b>	Ethernet; USB 2.0
<b>Interface:</b>	10BASE-T Network Interface USB 2.0 (Full-Speed/Hi-Speed compatible interface)
<b>Emulation:</b>	SPLC (Sharp Printer Language with JBIG Compression)
<b>Network Protocols:</b>	TCP/IP (IPv4)
<b>Printing Protocols:</b>	LPR, USB 2.0 [Hi Speed]
<b>Memory:</b>	Approx. 30 MB
<b>Print Size:</b>	8.5" x 14" to 3.87" x 5.83"
<b>Print Features:</b>	Duplex printing, offset print, status window, 2-up/4-up printing, fit to page, watermark
<b>Minimum System Requirements:</b>	Ethernet interface or USB port and CD-ROM drive; Windows 2000, XP, Vista
<b>Printing Software:</b>	Print driver, Printer Status Window
<b>Scan Once Print Many:</b>	Yes

## PC Scanning Specifications

<b>Type:</b>	Flatbed full color/monochrome PC scanning system
<b>Scanning Method:</b>	Document glass/RSPF
<b>Resolution:</b>	Basic: 600 dpi x 1200 dpi (optical) Setting Range: 50 dpi – 9600 dpi (maximum interpolated)
<b>Original Type:</b>	Sheets/books up to 8-1/2" x 14"
<b>Effective Scanning Area:</b>	8.5" (216 mm) (Lengthwise) x 14" (356 mm) (Width)
<b>Scanning Speed:</b>	2.88 msec/line
<b>Input Data:</b>	1 bit or 12 bit
<b>Bit Depth:</b>	24 bit color
<b>Output Data:</b>	R.G.B. 1 or 8 bits / pixel / A/D 16 bit
<b>Scanning Colors:</b>	Black and white 2 value, Grayscale, Full color
<b>Protocol:</b>	TWAIN, WIA (Windows XP/Vista only), STI
<b>Interface:</b>	USB 2.0 (Full-Speed/Hi-Speed compatible interface)
<b>Drop Out Color:</b>	Yes
<b>Void Area:</b>	None
<b>Scanner Software:</b>	Sharpdesk® desktop document management software, with Button Manager for scan destination control and image-to-text OCR (Optical Character Recognition)
<b>PC Scan Destinations:</b>	5 preset PC scan destinations can be configured using Button Manager
<b>File Formats:</b>	BMP/JPEG/TIFF/PDF
<b>Scanning Features:</b>	Scan to Sharpdesk, Scan to E-mail, Scan to Fax, Scan to OCR, Scan to Microsoft® Word (or other application), Scan to File

## Optional Equipment & Supplies

<b>AR-208ABD:</b>	Deluxe Cabinet (with door and locking casters)
<b>FO-55ND:</b>	Toner <sup>4</sup> (Yield: approx. 6,000 letter size pages, 5% image area)
<b>FO-55DR:</b>	Drum Cartridge <sup>4</sup> (Yield: approx 18,000 pages)
<b>MX-USX1:</b>	Sharpdesk 1 License Kit
<b>MX-USX5:</b>	Sharpdesk 5 License Kit
<b>MX-US10:</b>	Sharpdesk 10 License Kit
<b>MX-US50:</b>	Sharpdesk 50 License Kit
<b>MX-USA0:</b>	Sharpdesk 100 License Kit



# SHARP®

SHARP ELECTRONICS CORPORATION  
Sharp Plaza, Mahwah, NJ 07495-1163  
1-800-BE-SHARP • www.sharppusa.com

Design and specifications subject to change without notice. Sharp, My Sharp, Sharpdesk and all related trademarks are trademarks or registered trademarks of Sharp Corporation and/or its affiliated companies. Microsoft Word, Windows and Windows Vista are trademarks or registered trademarks of Microsoft Corporation. All other trademarks are the property of their respective owners.